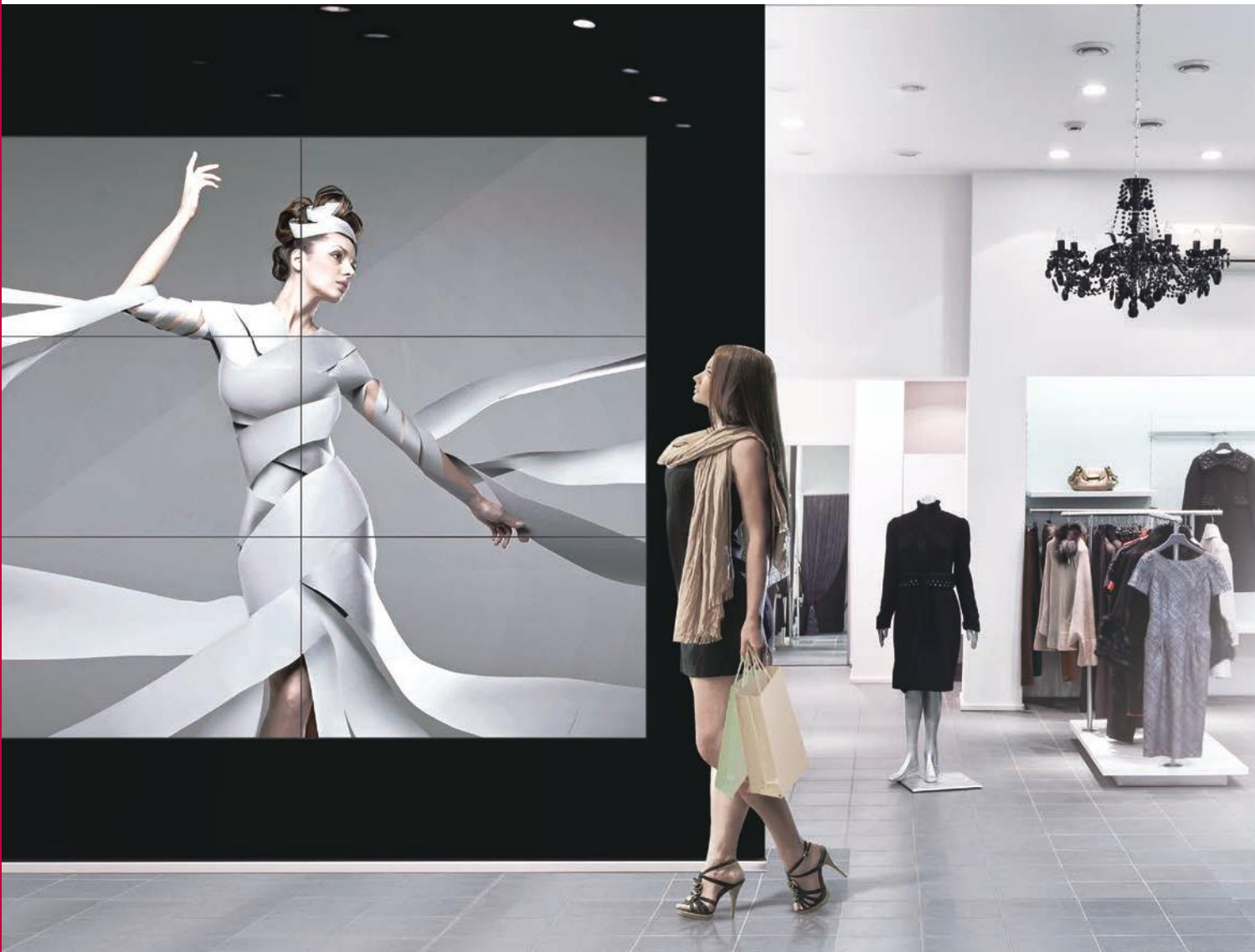


Ultra Narrow Bezel Video Wall

55LV77D/LV75D

With an ultra narrow bezel, the 55LV77D/75D provides viewers with greater immersion, thus imprinting the content on their minds. No matter where a passerby is when watching the screen, it maintains superior picture quality with vivid colors, allowing the content to come alive. The content can be produced easily in various layouts to match regular or irregular forms of the video wall screen with LG SuperSign software.



Key Points

- Overwhelming screen immersion with ultra narrow 3.5mm bezel to bezel
- Clear and consistent color reproduction from any angle with IPS panel
- Reliable picture quality supported by uniformed brightness and white balance
- Vivid Content Playback with TruMotion™ 60Hz Refresh Rate
- Convenient content management using SuperSign W

Ultra Narrow Bezel Video Wall

55LV77D/LV75D

Key Features

Immersive Viewing Experience

Ultra Narrow Bezel

The 3.5mm ultra narrow bezel size creates immersive and seamless viewing experiences on assembled video wall screens.



Bezel to Bezel 3.5mm
2.25mm (Left/Top)
1.25mm (Right/Bottom)

Wide Viewing Angle

IPS panel technology means a more advanced control of the liquid crystal display. As a result, it has a wide viewing angle that delivers clear content, no matter where a passerby views. Every pixel in the IPS panel truly reproduces the image colors without distorting them.



Superior Picture Quality

Uniform Brightness

LG's LED backlight technology guarantees high uniformity in brightness to ensure a clear picture. On other screens, certain spots may appear darker than others, but the new LV77D/75D generates high visibility and a consistent brightness across the whole screen.



Conventional (80%)

LV77D/75D

Consistent White Balance

Through Video Wall Image Creation (VIC) technology, color and brightness differences are compensated in circuit part with an algorithm to make the panels into a same characteristic so that each video wall maintains the consistent white balance.

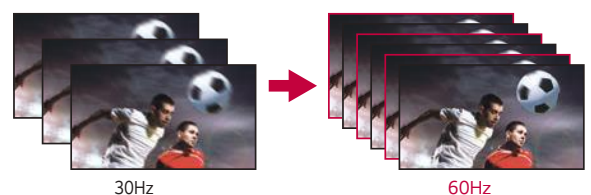


Conventional

LV77D/75D

Vivid Imagery Viewing

TruMotion™ 60Hz Refresh Rate drastically reduces motion blur and judder ensuring vivid image playback with fine details.



30Hz

60Hz

Ultra Narrow Bezel Video Wall

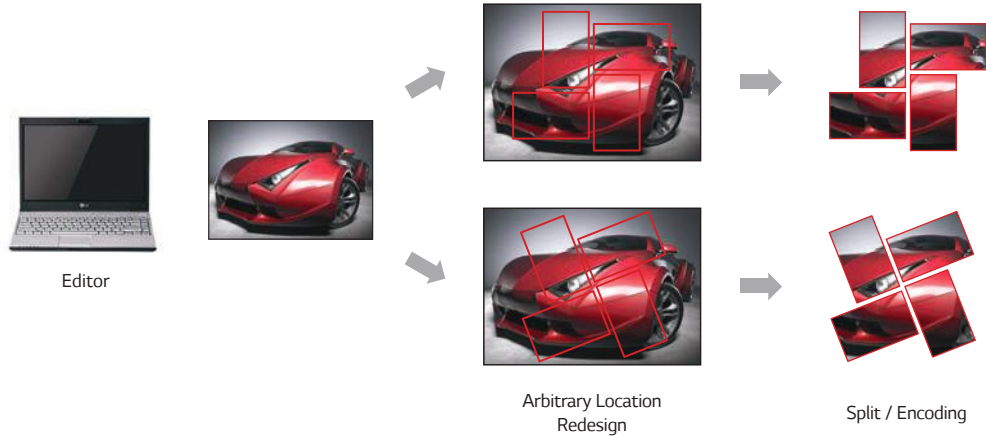
55LV77D/LV75D

Content Management



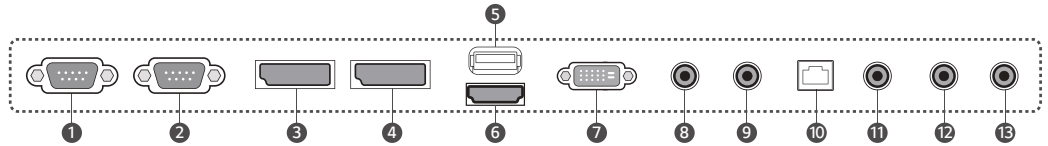
SuperSign W Content Management

Flexible content editing in various layouts including regular matrix and non-formal irregular video-wall is possible to your preference in a timely and cost effective manner without unnecessary expensive video wall console.



Connectivity

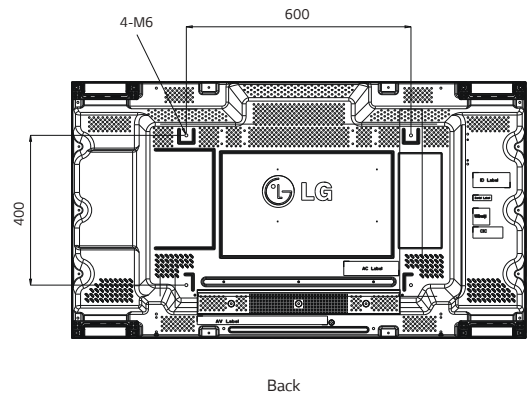
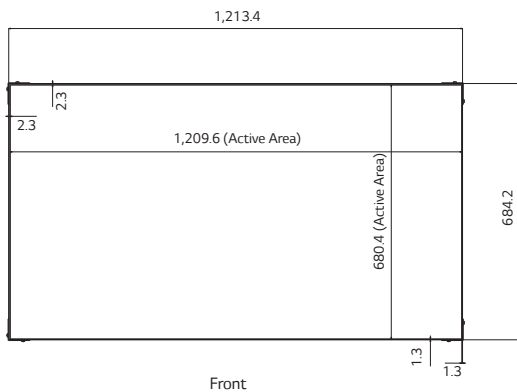
- ① RS-232C IN ⑧ RGB / COMPONENT IN
- ② RS-232C OUT ⑨ IR IN
- ③ DP IN ⑩ LAN
- ④ DP OUT ⑪ AV IN
- ⑤ USB IN ⑫ AUDIO IN
- ⑥ HDMI IN ⑬ AUDIO OUT
- ⑦ DVI IN



Dimension (unit : mm)

55"

1213.4 x 684.2 x 88.5 mm / 23 kg



Specifications

		55LV77D	55LV75D	
PANEL	Screen Size	55"	55"	
	Panel Technology	IPS	IPS	
	Aspect Ratio	16:9	16:9	
	Native Resolution	1,920 x 1,080 (FHD)	1,920 x 1,080 (FHD)	
	Brightness	700 cd/m ²	500 cd/m ²	
	Viewing Angle (H x V)	178 x 178	178 x 178	
	Response Time	12 ms (G to G)	12 ms (G to G)	
	Surface Treatment	Hard coating (3H), Anti-reflection treatment of the front polarizer (Reflectance <2%)	Hard coating (3H), Anti-glare treatment of the front polarizer (Haze 10%)	
	Life time	60,000 Hrs	60,000 Hrs	
	Guaranteed Operation Hours	24 Hrs	24 Hrs	
Orientation	Landscape & Portrait	Landscape & Portrait		
CONNECTIVITY	Input	HDMI, DP, DVI, RGB, Audio, USB		
	Output	DP, Audio		
	External Control	RS232C In/Out, RJ45 In, IR Receiver		
PHYSICAL SPECIFICATION	Bezel Color	Black	Black	
	Bezel Width (B to B)*	2.25 mm (L/T) / 1.25 mm (R/B)	2.25 mm (L/T) / 1.25 mm (R/B)	
	Monitor Dimension (W x H x D)	1,213.4 x 684.2 x 88.5 mm	1,213.4 x 684.2 x 88.5 mm	
	Weight (Head)	23 kg	23 kg	
	Carton Dimensions (W x H x D)	1,337 x 828 x 239 mm	1,337 x 828 x 239 mm	
	Packed Weight	30.5 kg	30.5 kg	
	Handle	Yes	Yes	
	VESA™ Standard Mount Interface	600 x 400 mm	600 x 400 mm	
SPECIAL FEATURES	Temperature sensor, Cooling FAN (LV77D Only), Tile mode (up to 15x15), Natural mode @Tile mode, ISM method, DPM select, Energy saving, Smart energy saving, File play with USB			
ENVIRONMENT CONDITIONS	Operation Temperature Range	0°C to 40°C	0°C to 40°C	
	Operation Humidity Range	10% to 80%	10% to 80%	
POWER	Power Supply	100-240V~, 50/60Hz	100-240V~, 50/60Hz	
	Power Type	Built-in Power	Built-in Power	
	Power Consumption	Typ.	230 W	160 W
		Max	290 W	230 W
Smart Energy Saving	130 W	130 W		
STANDARD (CERTIFICATION)	Safety	UL / cUL / CB / TUV / KC	UL / cUL / CB / TUV / KC	
	EMC	FCC Class "A" / CE / KCC	FCC Class "A" / CE / KCC	
	ErP / Energy Star	NA / No	NA / Yes (Energy Star 7.0)	
MEDIA PLAYER COMPATIBILITY	OPS Type Compatible	No	No	
	External Media Player Attachable	Yes	Yes	
SOFTWARE COMPATIBILITY	Content Management Software	SuperSign W	SuperSign W	
	Control and Monitoring Software	SuperSign C	SuperSign C	
ACCESSORIES	Basic	Remote controller, Power cable, DP cable, IR receiver, RS-232C cable, Tiling guide, Screw	Remote controller, Power cable, DP cable, IR receiver, RS-232C cable, Tiling guide, Screw	
	Optional	WM-L640V (Landscape), WM-P640V (Portrait), Frame kit (Horizontal: FK-55V10 / Vertical: FK-55V20)	WM-L640V (Landscape), WM-P640V (Portrait), Frame kit (Horizontal: FK-55V10 / Vertical: FK-55V20)	

*B to B: Panel Bezel + Panel Bezel

Download LG Commercial Display Mobile App



www.lg.com/b2b
[youtube.com/c/LGCommercialDisplay](https://www.youtube.com/c/LGCommercialDisplay)
<https://www.facebook.com/LGInformationDisplay/>
<https://www.linkedin.com/company/16235211/>

LG may make changes to specifications and product descriptions without notice.
 Copyright © 2017 LG Electronics Inc. All rights reserved. "LG Life's Good" is a registered trademark of LG Corp.
 The names of products and brands mentioned here may be the trademarks of their respective owners.

